



Designed & produced by shellsindia.com | Cell : +91-8220711108

Back cover

cover



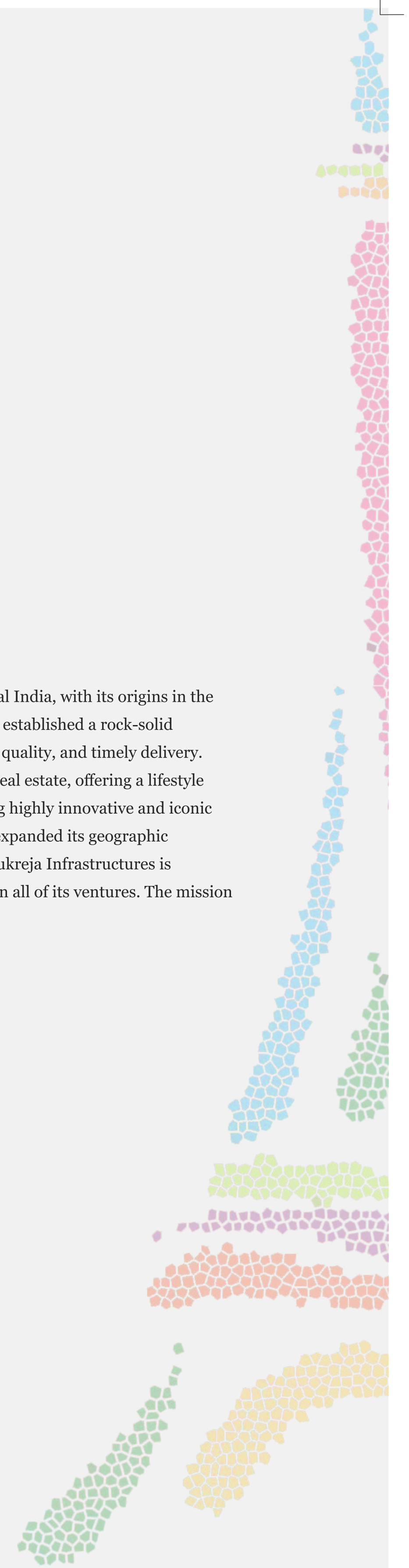
An emotion called Paris.

Paris is not just a city, it's an emotion. A heady blend of kaleidoscopic colours, aromas and sounds. Its many-splendored personality revels in its fashion, cuisine, music, art, culture, architecture, history and more. Paris pulsates with life, its energy, romance and vibrancy remain unmatched, bewitching the visitor as much as its resident. The Eiffel Tower stands tall in all its majesty reflecting this emotion called Paris in all its resplendent glory.



KUKREJA INFRASTRUCTURES

The Kukreja Group is a highly esteemed and diversified name in central India, with its origins in the pharma sector. Kukreja Infrastructures, a leading realty company, has established a rock-solid reputation based on the principles of pure customer delight, premium quality, and timely delivery. Today, the Kukreja Infrastructures brand is synonymous with luxury real estate, offering a lifestyle that surpasses aspirational standards. With a track record of delivering highly innovative and iconic developments in its home turf of Nagpur, the company has gradually expanded its geographic footprint in other markets by replicating its proven business model. Kukreja Infrastructures is committed to offering the latest global trends and premium comforts in all of its ventures. The mission is to make an ultra-luxurious lifestyle within reach for most.





Paris City- a whiff of Paris in our city. That's the vision. To capture the romance, the verve, the spirit and the many- splendored personality in an exclusive gated community that aspires to celebrate life in all its myriad hues.

Pulsating energy
Alluring vibrance
Refined taste
Sensuous sophistication
Its exquisite all the way...

Gate fold



Enter an Extravaganza of Opulence

The awe-inspiring, majestic composition in concrete will make the guests miss a beat with the play of splendour and space at the entrance. The high ceiling in conjunction with the sheer spaciousness, topped by the grandiosity of design and materials is sure to cast a spell for a lifetime.



Not just an Evening in Paris, but an Entire Life in Paris

Imagine life in the lap of sophisticated, urbane luxury. Imagine acres of lush green paradise with azure water bodies punctuated with belvederes. And now stop imagining and start luxuriating in them for the rest of your life. Welcome to Paris City, a stunning development that is a tribute to fine living, with an emphasis on uncompromising quality and attention to detail. Let the grandeur of Paris City bowl you over.



The Parisian Landscape

The river Seine is a part of the mystique of Paris, flowing through the middle of the city, with the Left Bank (Rive Gauche) to the south and the Right Bank (Rive Droite) to the north. Paris City recreates this magic, with its central development of an ultra-luxurious clubhouse, shimmering swimming pools with exquisitely manicured and landscaped flowering gardens dividing the 6 towers of Paris City into three on either side. A sight to behold and an ethereal experience to be cherished.

6 Towers

3/4/4.5 BHK

Picturesque Landscaping

Community-Centric Clubhouse

Lavish Lifestyle Amenities

Blues Were Never This Inviting

The azure blue water seems to stretch to infinity becoming one with the skies. Dive into the infinity pool to drown the day's stresses away and come out a refreshed soul recharged to take on life again.



INFINITY POOL



THEATRE



MAJESTIC BANQUET



STARLIT SITOUT



Stay in Shape

Paris City boasts of state-of-the-art sports and fitness facilities, both indoor and outdoor, to ensure you're always on top of your game.



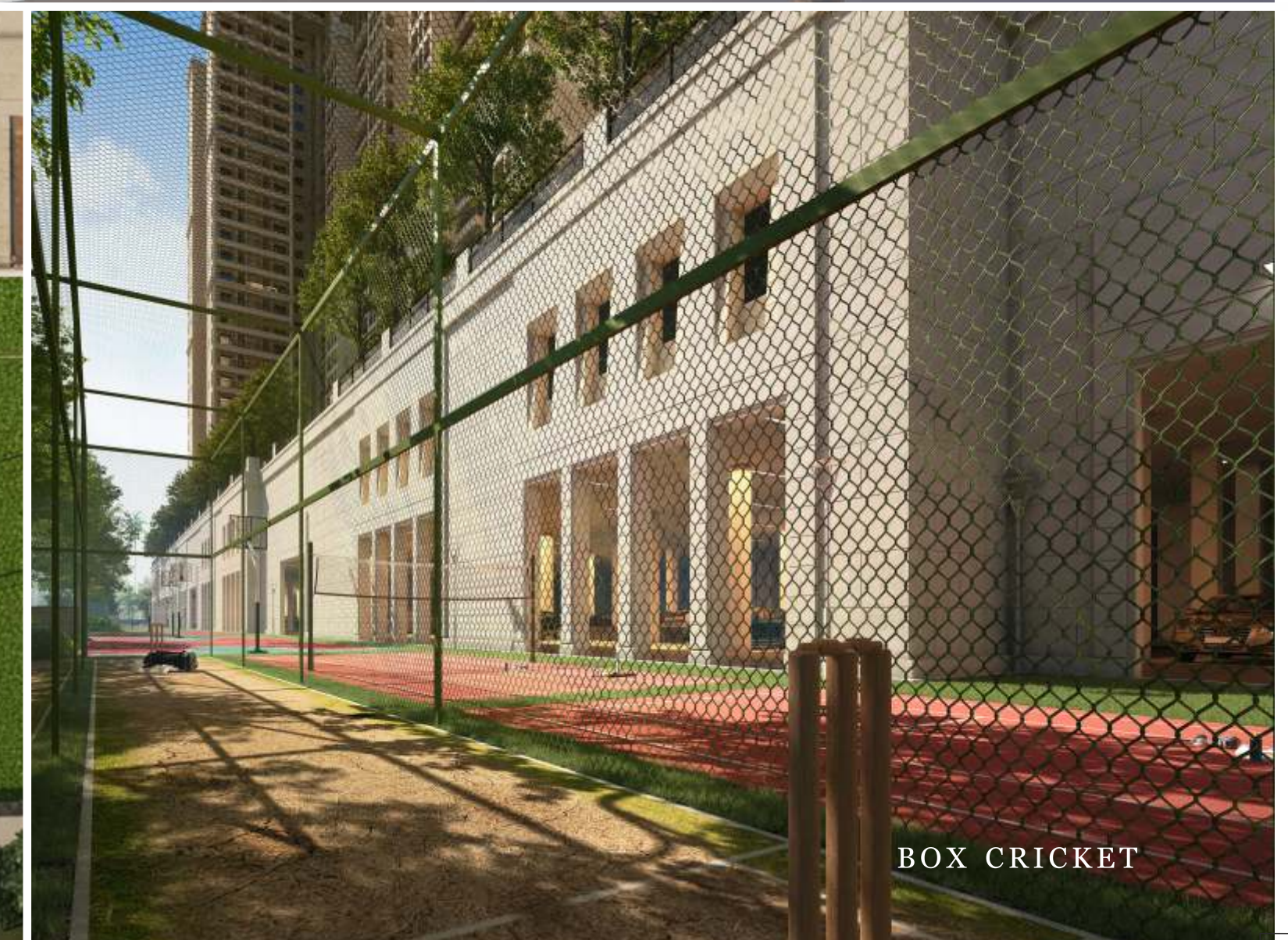
INDOOR BADMINTON COURT



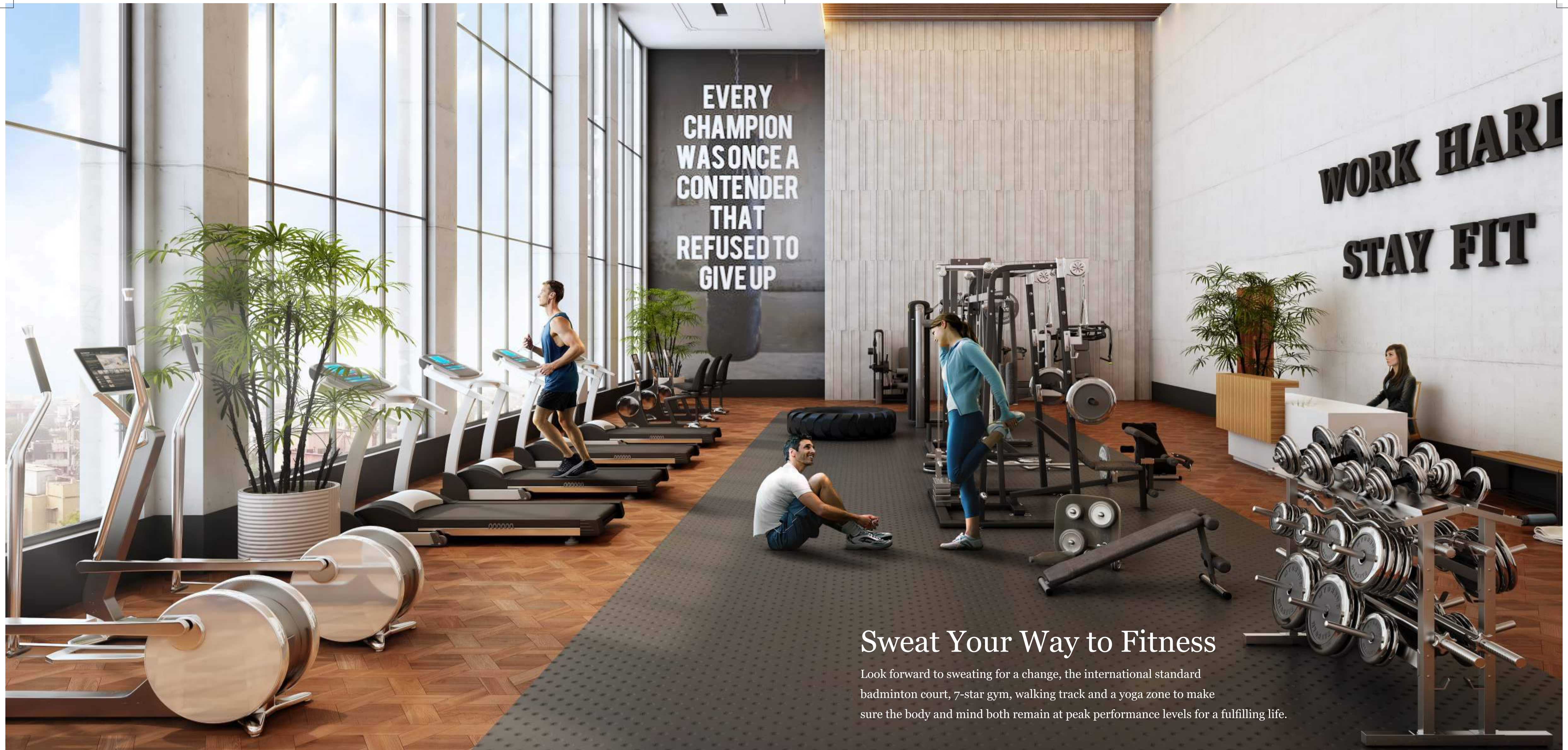
MULTIPURPOSE COURT



FUTSAL TURF



BOX CRICKET

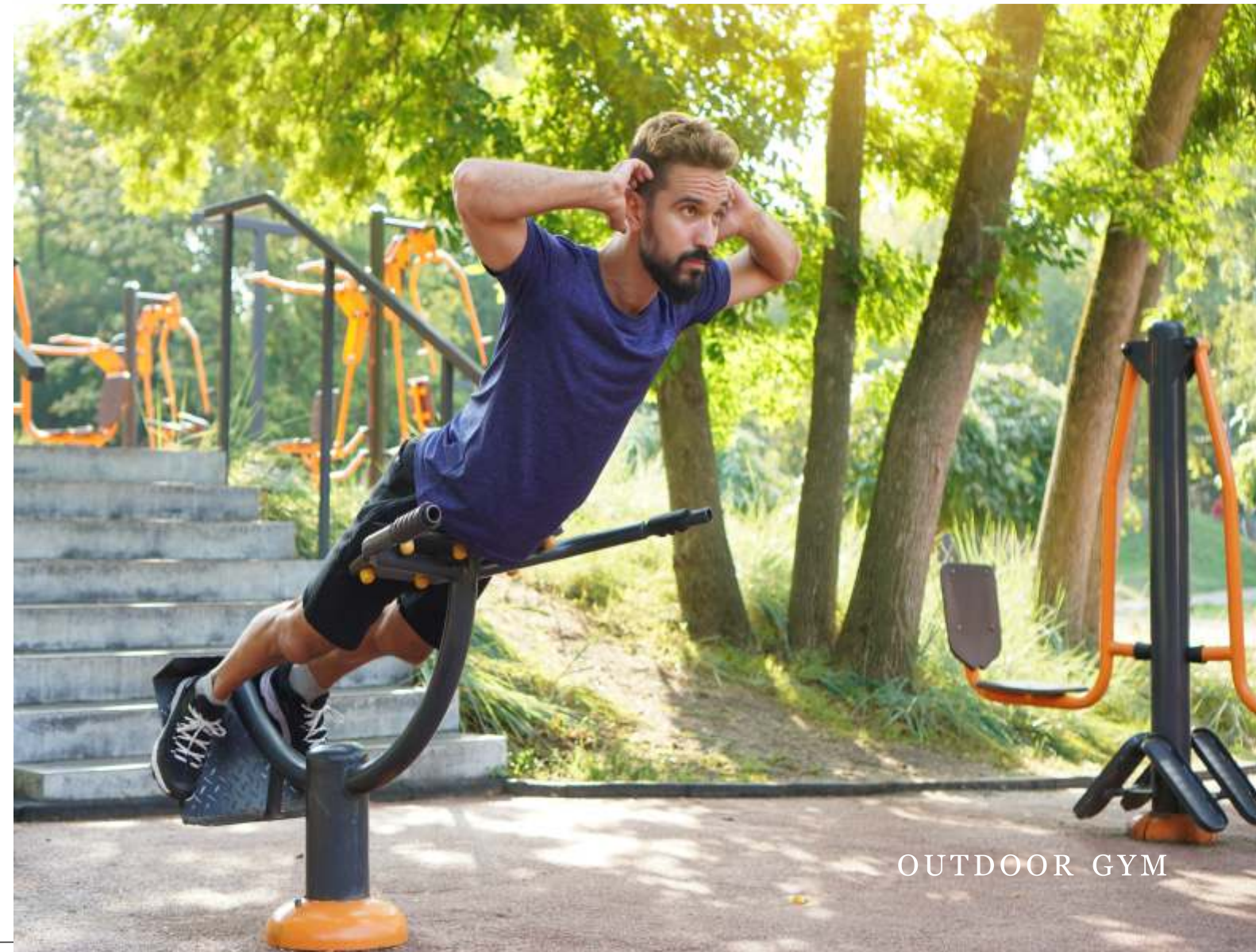


EVERY
CHAMPION
WAS ONCE A
CONTENDER
THAT
REFUSED TO
GIVE UP

WORK HARD
STAY FIT

Sweat Your Way to Fitness

Look forward to sweating for a change, the international standard badminton court, 7-star gym, walking track and a yoga zone to make sure the body and mind both remain at peak performance levels for a fulfilling life.



OUTDOOR GYM



YOGA ZONE

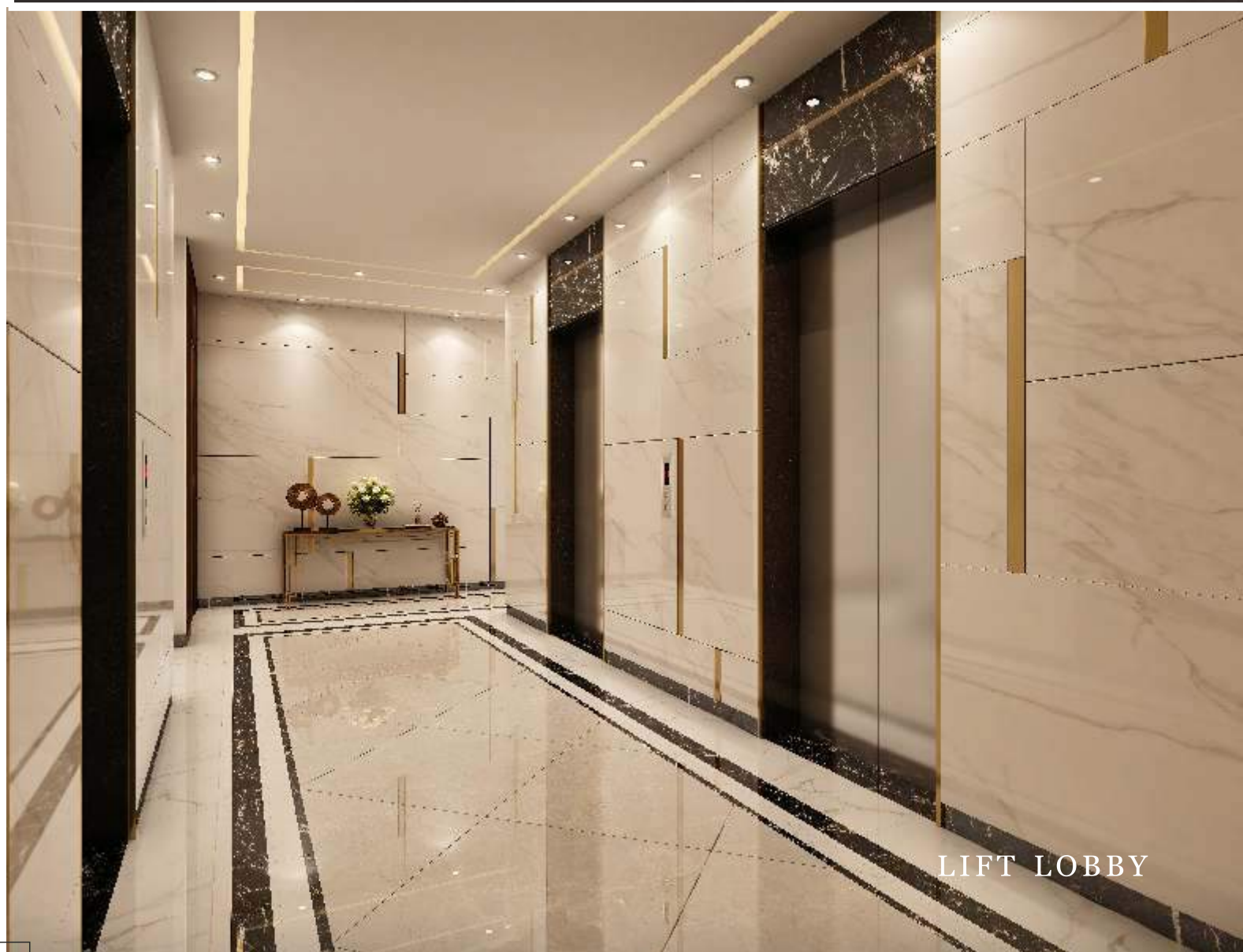


REFLEXOLOGY PARK



Beyond the Living Room

The living room is a focal point of the home, setting the tone for the entire residence. It is where you welcome and entertain those close to you. It defines and amplifies your personality to the world. At Paris City, being conscious of the immense importance of this core space, we've brought character and concept to provide it with the impactful influence and identity that you deserve.



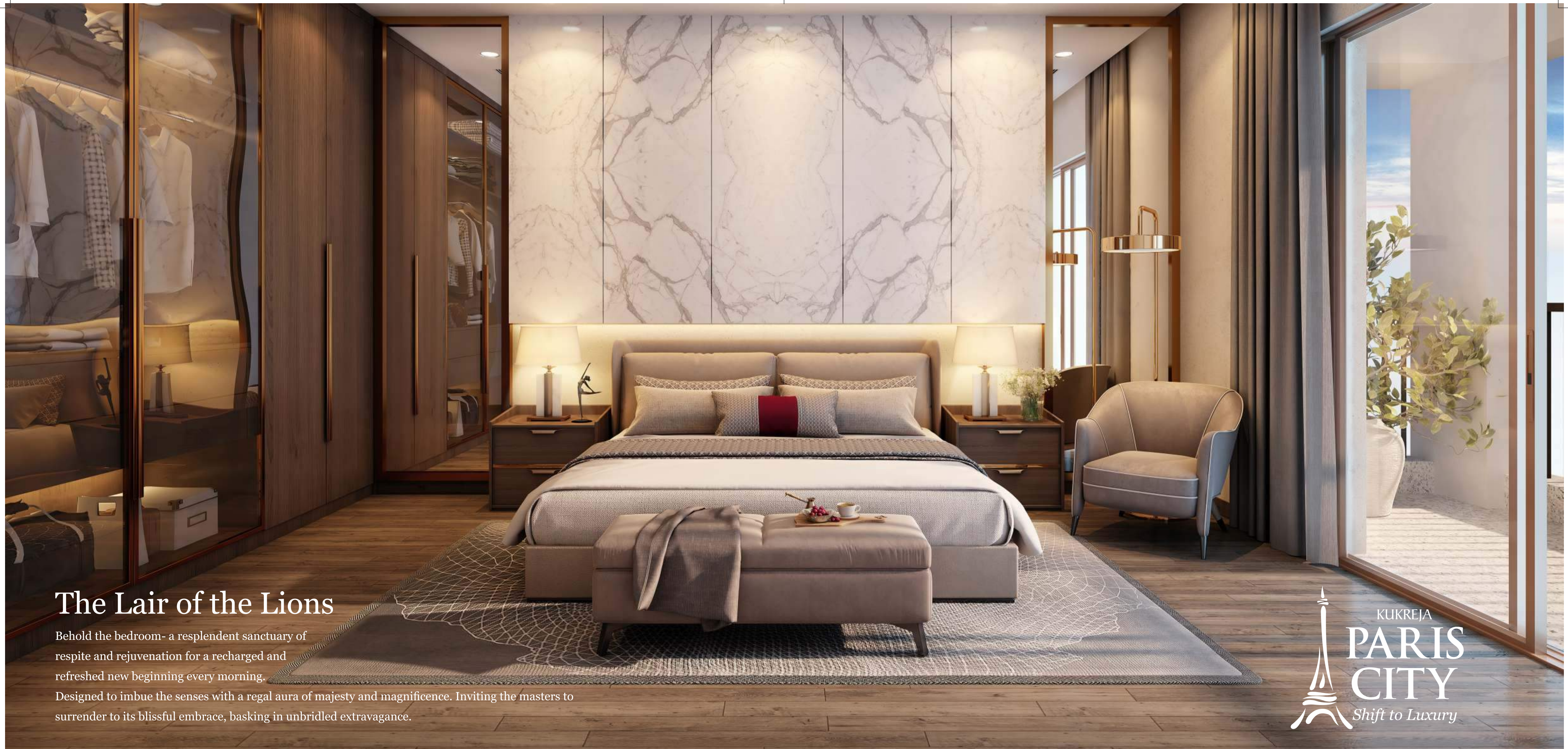
LIFT LOBBY



ENTRANCE FOYER



KITCHEN



The Lair of the Lions

Behold the bedroom- a resplendent sanctuary of respite and rejuvenation for a recharged and refreshed new beginning every morning.

Designed to imbue the senses with a regal aura of majesty and magnificence. Inviting the masters to surrender to its blissful embrace, basking in unbridled extravagance.





A city which encompasses every emotion, every need and every want is a rare find. Such a city has been brought to life in the heart of central India, beckoning those who seek a perfect blend of luxury, comfort and convenience. Here, life unfolds in a kaleidoscope of colours and sounds, from the rich aroma of gourmet cuisine to the vibrant rhythm of music and art. Residents and visitors alike are captivated by the irresistible charm and energy of this city, a place where every aspect of modern living is taken care of. From state-of-the-art infrastructure to world-class amenities, this city is designed to fulfil every need and desire, creating a lifestyle that is both indulgent and fulfilling. Come, experience the magic of this city, where every emotion, every need, and every want is within reach. Where each home is meticulously crafted to perfection.

Immerse yourself in the epitome of urban living, with amenities that cater to your every need. From the breathtaking views to the world-class facilities, experience a life of unparalleled luxury in Paris City.



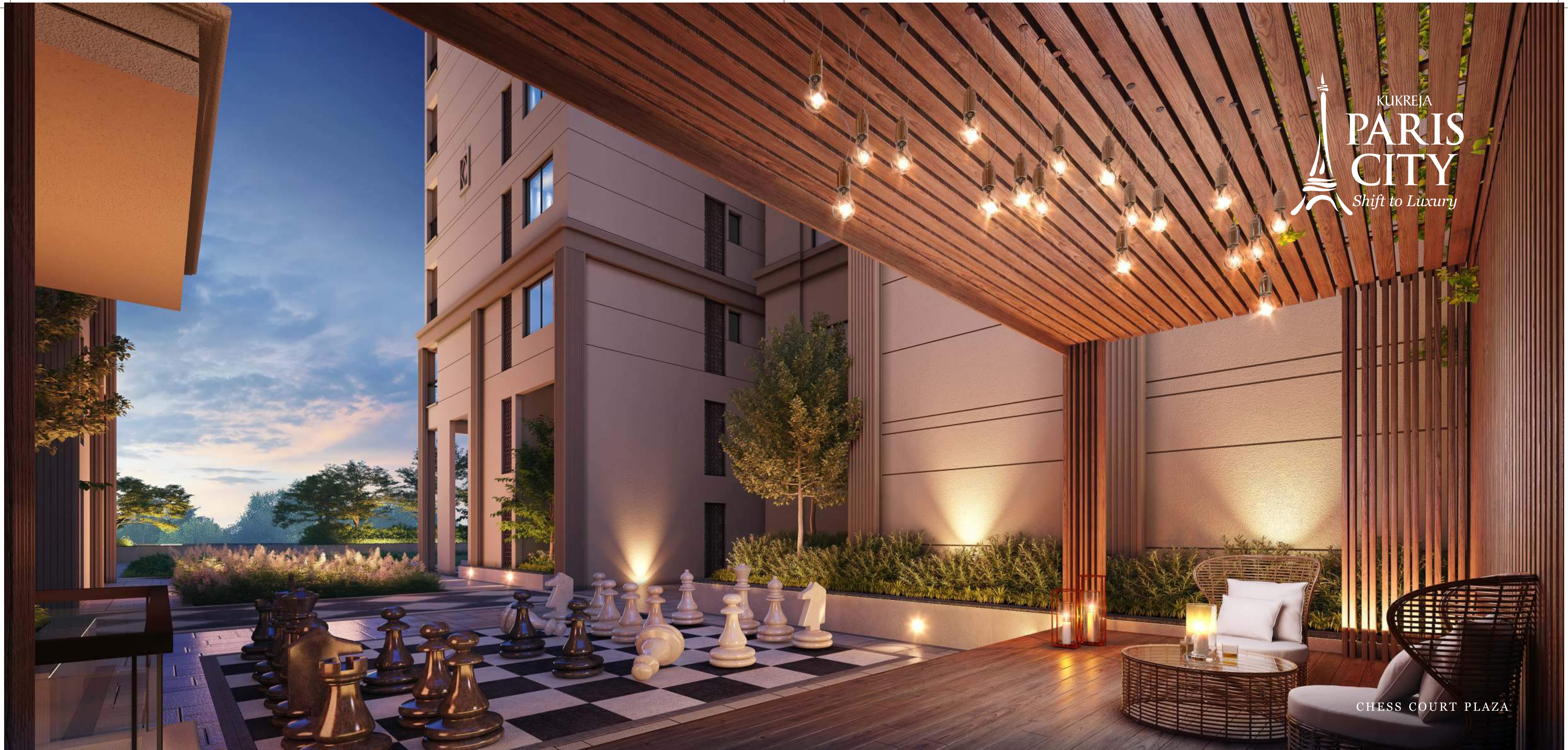
CELEBRATION LAWN



GAZEBO



AMPHITHEATRE



CHESS COURT PLAZA



OUTDOOR PLAY AREA



SANDPIT



KIDS' SOFT PLAY AREA



Podium

1. Yoga Lawn
2. Congregation Lawn
3. Zen Garden
4. Fitness Area
5. Organic Garden
6. Gazebo
7. Reflexology Park
8. Gazebo For 15-20 People
9. Board Games For Senior Citizen
10. Butterfly Garden
11. Celebration Lawn
12. Plaza
13. Pergola
14. Flower Bed
15. Planted Bed
16. Surprise Fountatin
17. Amphitheatre With Lawn
18. Kids Play Area/ Board Game
19. Seating Alcove
20. Gym
21. Seating Deck

Ground Floor

1. Commercial Entry / Exit
2. Residential Entry / Exit
3. Commercial Block
4. Welcome Plaza
5. Drop Off Zone
6. Walk Of Infinity
7. Basketball Court
8. Half Basketball Courts
9. Badminton Court
10. Volleyball Court
11. Multipurpose Court
12. Cricket / Football Turf
13. Cricket Pitch
14. Visitor Car Parking

The Club

1. Indoor Badminton Court
2. Banquet
3. Lounge
4. Gym
5. Infinity Swimming Pool
6. Guest Suites
7. Kids Play Zone
8. Steam And Sauna
9. Theatre
10. Game Zone
11. Society Office
12. Convenience Store

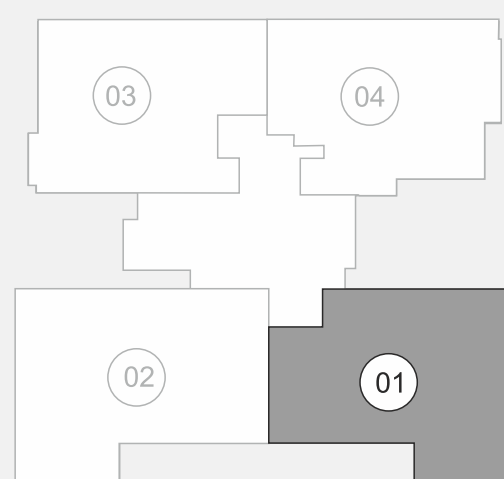
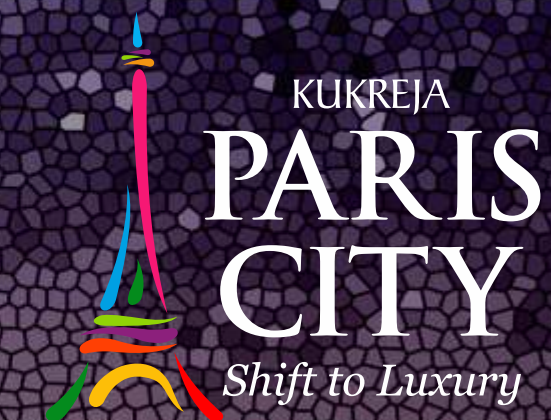
Typical Floor Plan **4 BHK**

Typical Floor Plan **3 BHK**

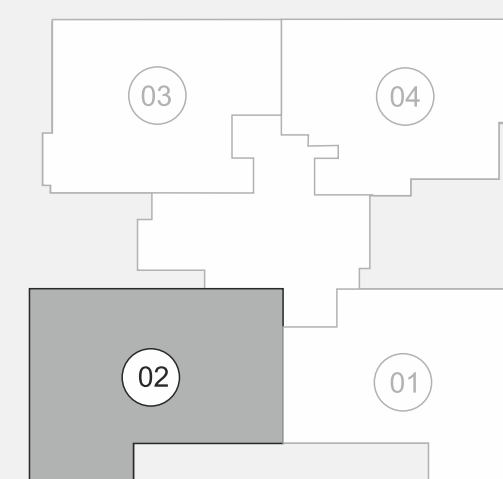
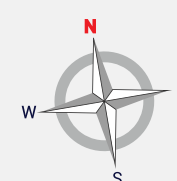


Flat-01 **4 BHK**

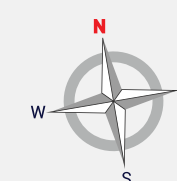
Flat-02 **4.5 BHK**



DESIGN-3388

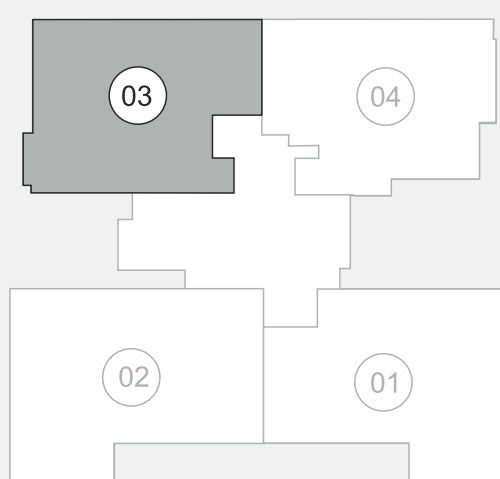


DESIGN-3590

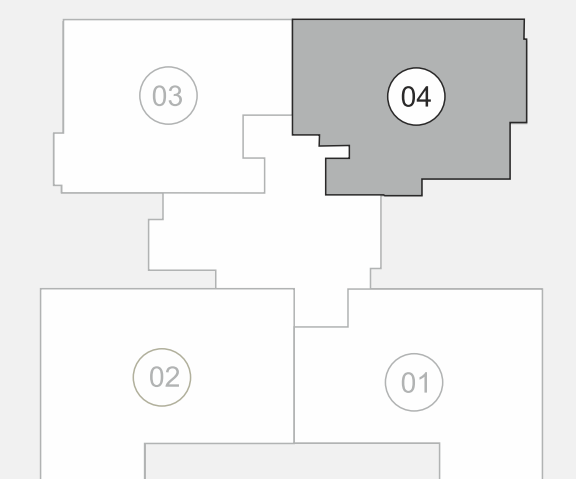
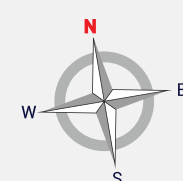


Flat-03 **4 BHK**

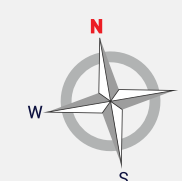
Flat-04 **4 BHK**



DESIGN-3087

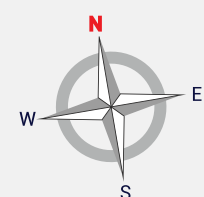


DESIGN-2979

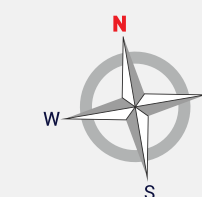
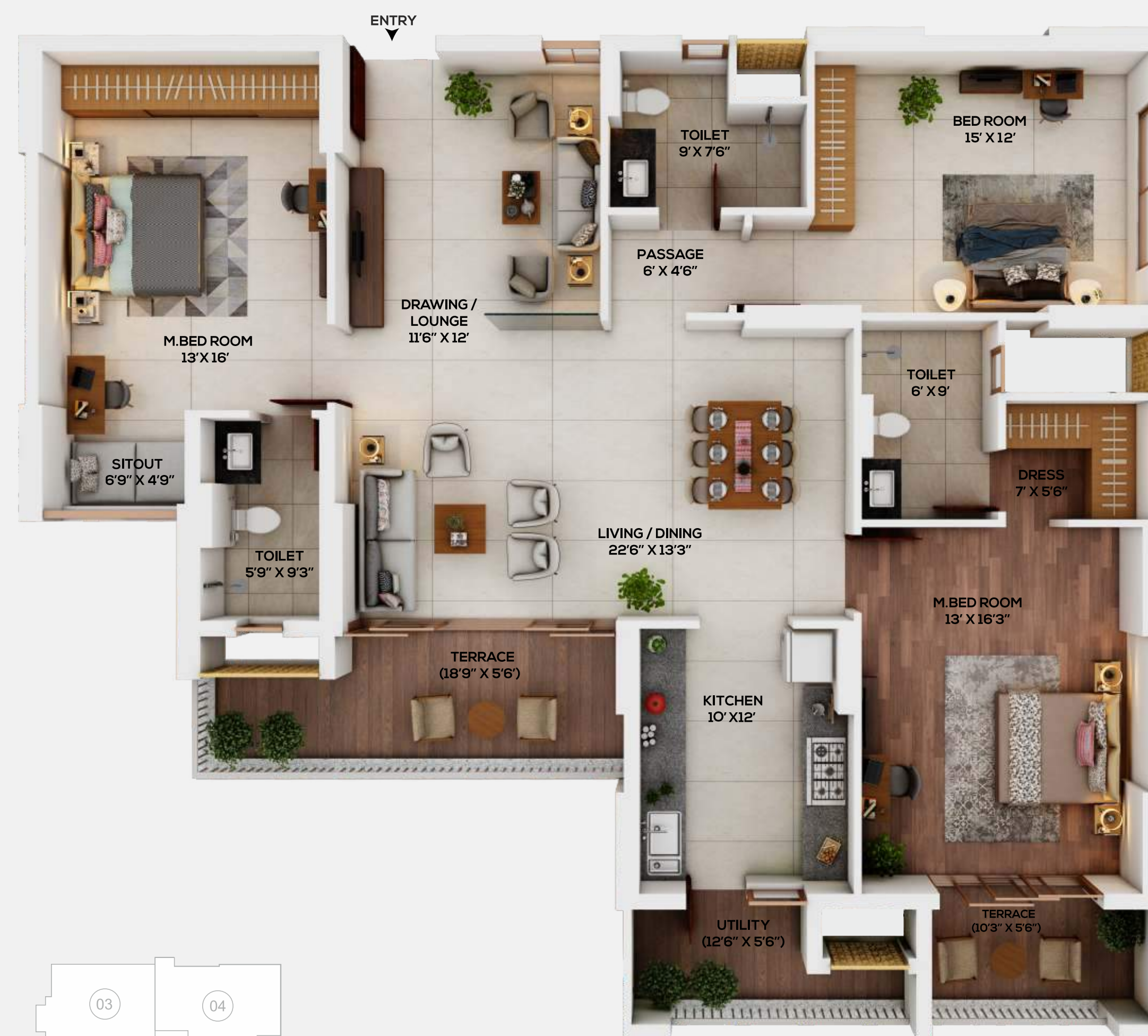
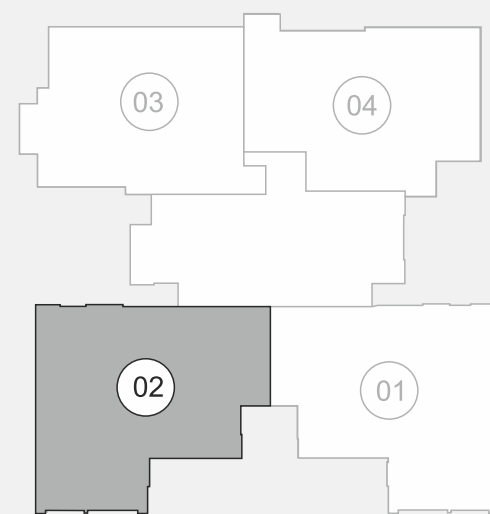


Flat-02 **3 BHK**

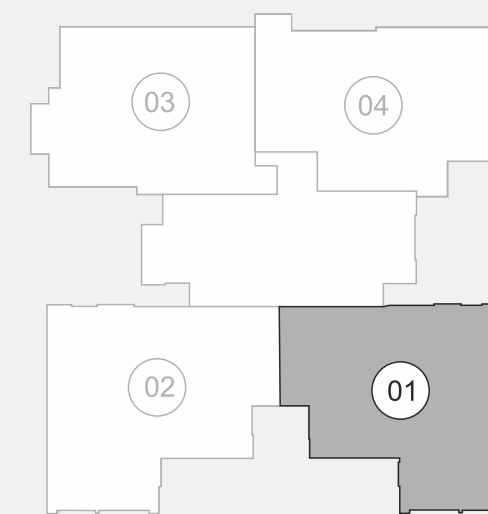
Flat-01 **3 BHK**



DESIGN-2290

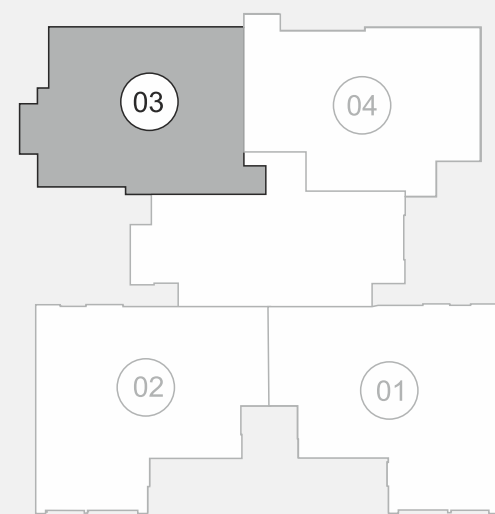


DESIGN-2290

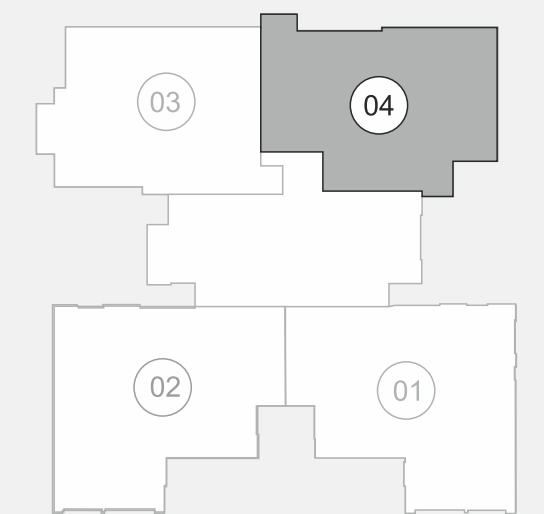
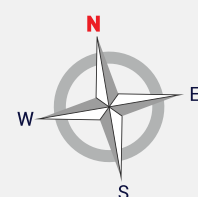


Flat-03 **3 BHK**

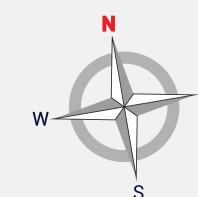
Flat-04 **3 BHK**



DESIGN-1988



DESIGN-2097



Specifications

Internal

- Premium grade, Italian finish tiles on floor
- Anti-skid, wooden finish tiles in the balcony
- Flush doors with veneer / laminates finish on both sides
- French windows with cladding on sills & jambs
- Heavy section aluminum windows / UPVC windows
- Kitchen dado with designer tiles
- Quartz / granite platform in the kitchen
- Stainless steel sink with drainboard
- Exclusive utility area in the kitchen with provision for a washing machine
- Toilet combination of designer tiles up to 8'-0" ht. & anti-skid floor tile
- Premium water-efficient sanitaryware- Toto / Jaquar / Kolher or equivalent
- Separate shower section
- Provision of TV / phone / internet
- Electrical light points with switches
- Steel railing in the balcony and sun decks
- Provision points for split AC
- Wires – RR/ Finolex / Polycab or equivalent
- Wooden laminated flooring in master bedroom
- Walls – External-150 mm brick / RCC
Internal-100 mm thick

External


- Three level security
- Double height entrance lobby
- Huge drop-off area
- High speed elevators & stretcher lifts
- Fire staircase
- Earthquake resistant structure
- D.G. power backup to common area
- Multi-level parking
- Elegantly designed spacious lift lobbies
- Fire alarm system / sprinklers / hooters for common areas
- Restrooms for drivers / domestic help
- Waterproofing treatment on the terrace / podium / washrooms

Our Landmark Projects





THE ONE
Ultra Luxurious
Living Experience
Air India, Civil Lines




INFINITY
Limitless Luxury
Tallest Tower of
Central India
Civil Lines, Nagpur




**INFINITY
EAST**
Crown of
East Nagpur
Wardhaman Nagar, Nagpur




Kukreja Embassy
Experience the Luxury
First Boutique
Apartments of Nagpur
Byramji Town, Nagpur

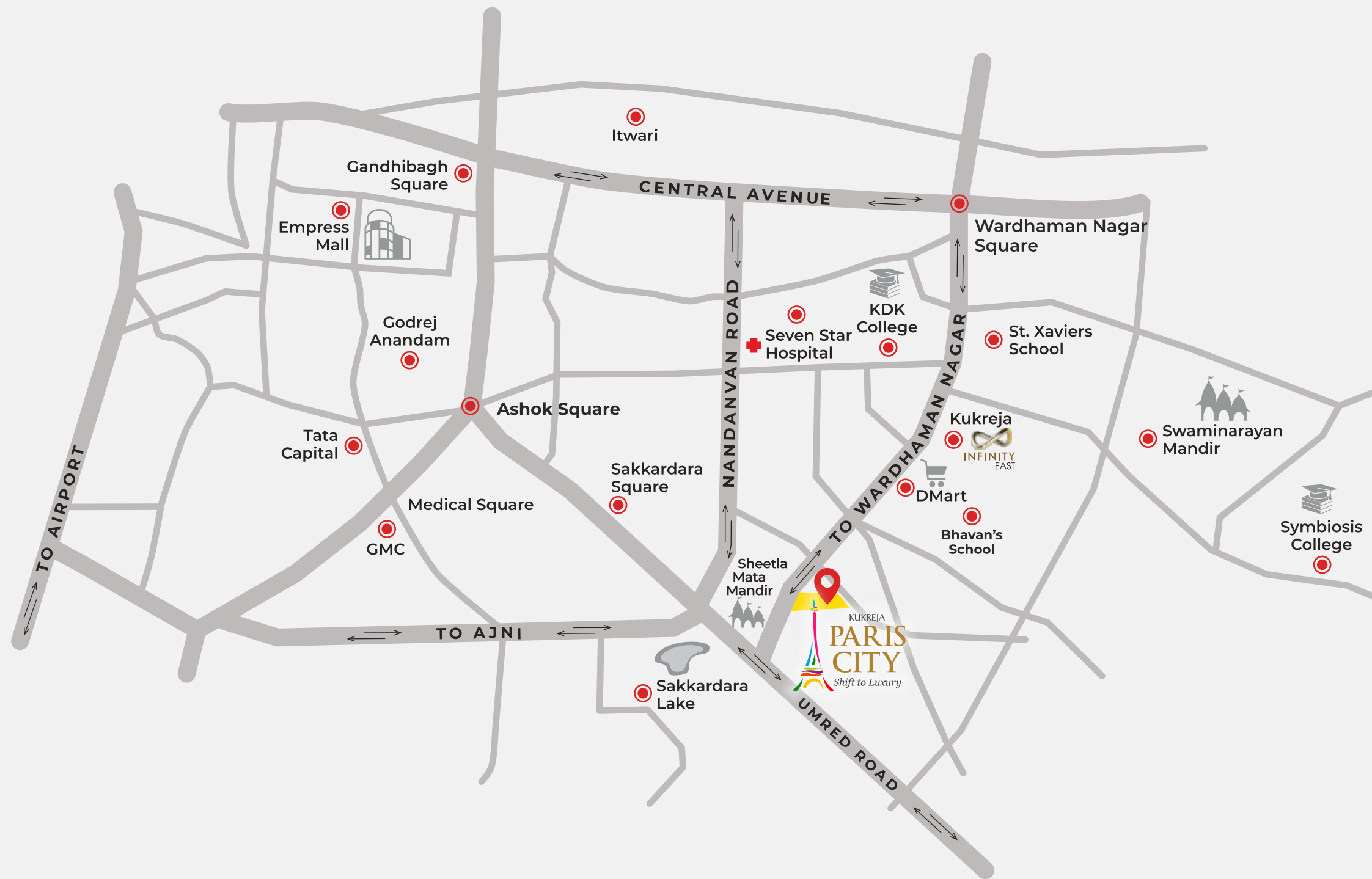


**KUKREJA
BUSINESS
PARK**
Mihan, Nagpur




**KUKREJA'S
SUN
CITY**
Dixit Nagar, Nagpur

Location Map

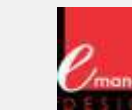


Credits

Architects
Rajinder Kumar Associates, New Delhi



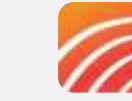
Emanate Design



Structural Consultant
Patankar Consultant Pvt. Ltd.



MEP Consultants
Prion Consultants Pvt. Ltd.



Landscape Consultant
Integral Designs International Studio, New Delhi



Legal Consultants
- Dwivedi & Khedkar Associates
- Sandeep Shastri & Associates

Brand Consultant & Design
Shells Advertising Inc.



Mayabious Art LLP



Contact

Site Address

PARIS CITY

Middle Ridge Road, Ishwar Nagar,
Nandanvan, Nagpur, Maharashtra 440024

Corporate Office

Kukreja Infrastructures

Kukreja House, Museum Road,
Civil Lines, Nagpur, Maharashtra 440001

Mob : 7888019977/88

E-mail : marketing@kinfra.in

Web : www.kinfra.in



MAHA RERA No. : P50500049636

While every reasonable care has been taken in preparing this brochure, the developers and/or its agents cannot be held responsible for any inaccuracies. The layout and plan specifications of buildings are tentative and are subject to variations. Kukreja Infrastructures reserves the right to make variations, additions, alterations, deletions, and/or modifications as it deems appropriate and fit or as it may be directed by any competent authority. No layout shown in the brochure is indicative of how the unit can be used. All renderings of floor plans, pictures, and maps are an artist's conception and not the actual depiction of the building, its walls, roadways or landscaping. The brochure is purely conceptual and does not constitute a legal offering. Please note this brochure presents the artistic impressions of the proposed phase-wise development planned.